



Public Works

FY27 Proposed Budget

Mission Statement

The mission of the City of Pocatello Public Works Department is to provide reliable, sustainable, and cost-effective infrastructure and public services that protect public health, promote safety, and enhance the quality of life for our community through innovation, teamwork, and responsible stewardship.

About the Department

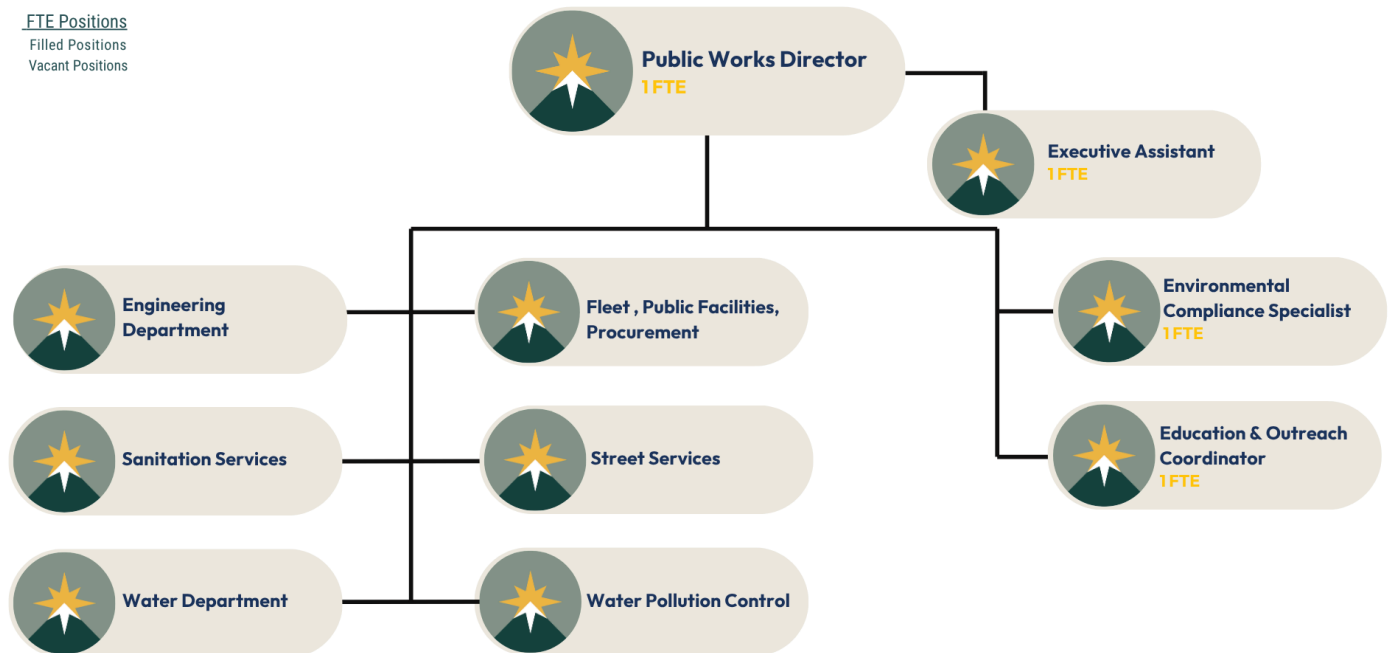
The City of Pocatello Public Works Department provides essential infrastructure and municipal services that support public health, safety, environmental stewardship, economic growth, and quality of life for residents, businesses, and visitors. Through its divisions including Engineering, Environmental Compliance, Education & Outreach, Sanitation Services, Street Services, Water, and Water Pollution Control, Public Works oversees the planning, construction, operation, maintenance, and regulatory compliance of the City's transportation systems, drinking water and wastewater utilities, stormwater programs, solid waste and recycling services, public education initiatives, and critical public infrastructure while ensuring compliance with local, state, and federal permitting and regulatory agencies through responsible, transparent, sustainable, and cost-effective service delivery to the community.

Department Organization

Public Works Department

FTE Positions

Filled Positions
Vacant Positions

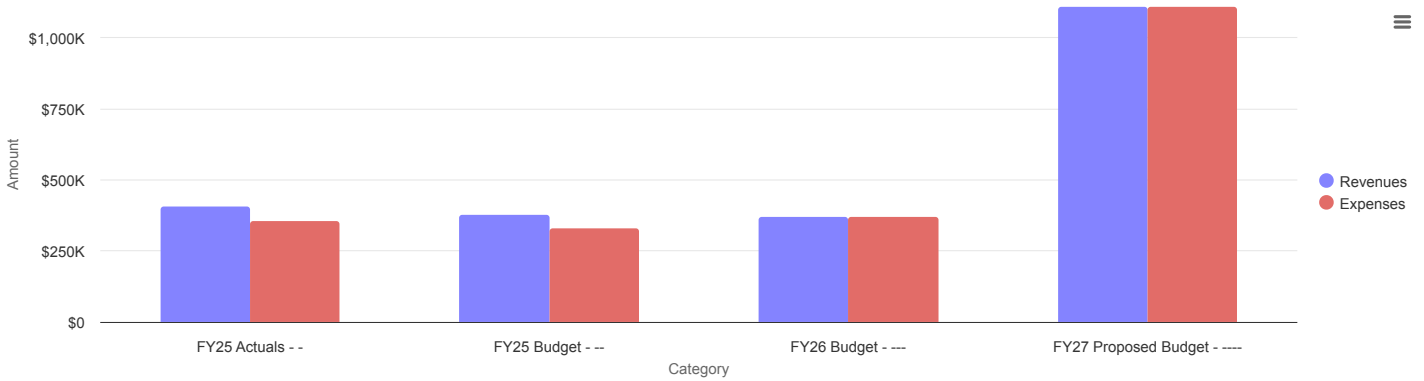


Departmental Goals

Future goals for the City of Pocatello Public Works Department include investing in innovative technologies, modern infrastructure systems, and data-driven decision-making tools that improve operational efficiency, service reliability, and long-term planning. Emphasis will continue to be placed on proactive asset management, infrastructure resiliency, and sustainable capital improvement planning to ensure the City's transportation, water, wastewater, stormwater, and sanitation systems continue to meet the evolving needs of the community. Public Works also aims to strengthen emergency preparedness capabilities, improve response coordination during critical events, and pursue sustainable operational practices and strategic financial opportunities that support long-term infrastructure investment and responsible stewardship of public resources.

Additionally, Public Works is committed to expanding public education, community outreach, and transparency initiatives to strengthen public trust and encourage community involvement in City services and environmental stewardship efforts. Future priorities include enhancing interdepartmental collaboration, improving communication with residents and stakeholders, increasing sustainability practices, and continuing to deliver high-quality, cost-effective public services that protect public health, safety, environmental quality, and the overall vitality of the City of Pocatello.

Revenues vs Expenditures



Data Updated: May 26, 2026, 7:38 PM

[View Report](#)

Revenues vs Expenditures Detail

054 - Public Works

	FY25 ACTUALS	FY25 BUDGET	FY26 BUDGET	FY27 PROPOSED BUDGET
Revenues				
382-41-02 - Env Fair Donations	-	-	-	\$8,000
312-98-00 - Other Permits	-	-	\$0	\$1,500
343-99-01 - Other Reimbursements Chubbuck	-	-	\$0	\$23,173
343-99-02 - Other Reimbursements Bannock County	-	-	\$0	\$21,489
343-99-03 - Other Reimbursements ITD	-	-	\$0	\$7,002
343-99-04 - Other Reimbursements Idaho State University	-	-	\$0	\$7,002
370-60-01 - Administrative Support Public Works Director	\$312,092	\$312,092	\$323,143	\$1,040,647
370-99-00 - Other	\$64,000	\$64,000	\$48,000	\$0
386-99-00 - Refunds	\$504	\$0	\$0	\$0
393-99-00 - Nonreciprocal	\$30,109	\$0	\$0	\$0
REVENUES TOTAL	\$406,705	\$376,092	\$371,143	\$1,108,813
Expenses				
Salaries	\$146,684	\$166,416	\$173,394	\$339,102
Salary Related Expenses	\$104,050	\$73,002	\$77,791	\$144,681
Operations and Maintenance	\$3,170	\$9,089	\$9,350	\$190,108
Supplies and Materials	\$426	\$2,500	\$2,500	\$19,000
Professional and Contracted Services	\$64,138	\$41,692	\$75,476	\$337,221
Debt Service	-	-	\$0	\$5,000
Internal Services	\$36,589	\$37,073	\$31,750	\$66,550
Intergovernmental Transfers	\$856	\$856	\$882	\$7,151
EXPENSES TOTAL	\$355,912	\$330,628	\$371,143	\$1,108,813
Rev - Exp	\$50,793	\$45,464	\$0	\$0

Visit the City of Pocatello's Website

911 N 7th Avenue
Pocatello, ID 83201

Geographic Information Systems

FY27 Proposed Budget



Mission Statement

The City of Pocatello Geographic Information Systems (GIS) Division provides the essential maps, spatial analytics, and critical insights that streamline municipal operations, enhance public transparency, and support data-driven decision-making. GIS staff manage a centralized system of geospatial data that combines dynamic technology with innovative solutions to better inform Pocatello residents and drive the daily workflows of over 75% of City departments.

About the Division

What We Do

The GIS Division is responsible for designing, implementing, and maintaining a complex ecosystem of technology that covers the entire data lifecycle, from collection to analytics. GIS operations are divided into three key parts:

- **Geographic** (The *Where*): Creating maps, Collecting field data, performing spatial analysis, and visualizing complex information
- **Information** (The *What*): Designing databases, constructing datasets, aggregating information, and managing critical records
- **Systems** (The *How*): Maintaining a robust server environment, developing interactive web applications, and managing enterprise software integrations and accounts

By managing all three parts, GIS staff ensure that users can seamlessly leverage powerful spatial analytics and data management tools within the City's GIS system.

Why It Matters

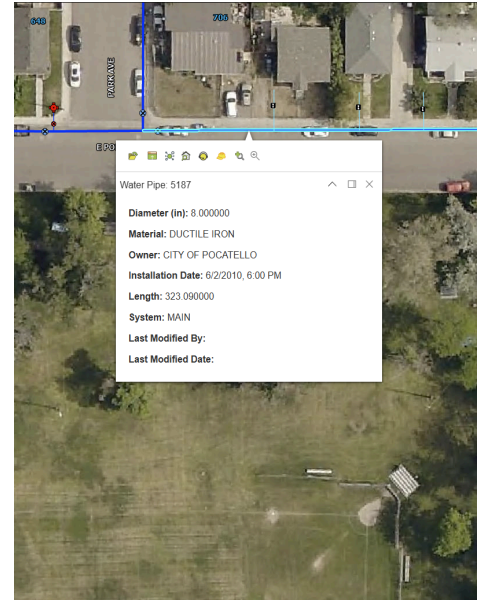
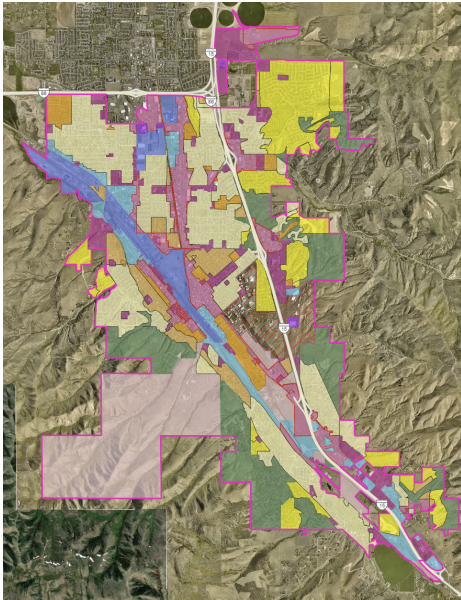
Maps are much easier to understand than spreadsheets, and GIS allows City staff to make smarter decisions that optimize resource allocation and minimize operational costs. GIS breaks down traditional information silos and increases public transparency by providing interactive web-based access to the data where it is needed most, whether that's by citizens at home, staff in the office, or crews on a work site. Ultimately, the City's GIS systems significantly reduce the administrative burden across departments, empowering staff to spend more time doing the work that matters most to Pocatello's residents.

Ways We Help Residents

The GIS Division provides Pocatello residents with access to high-quality maps and data that allow for greater visibility into City operations and answer common geographic questions. As a part of this effort, the GIS Division maintains the [Pocatello Maps](#) page on the City website, which provides residents with 24/7 access to GIS data through the [Pocatello GIS Map](#) and the [Pocatello Planning Map](#). The City's public web maps are heavily used by residents, with over 10,000 views per year across all public maps. These public maps contain all kinds of useful information including: zoning areas, future land use, neighborhood districts, city roads, public trees, trailheads, historic aerial imagery, and more.

In addition to the online maps, the GIS division also supports residents by creating maps for public projects that appear on the City's social media pages, mapping addresses to facilitate permitting, and managing GIS software integrations with the City's

service request system, SeeClickFix. GIS staff have mapped over 1,000 addresses within the last year, improving the efficiency of the permitting process.



Division Organization

The GIS Division is staffed by two full-time employees: the GIS Coordinator and the GIS Analyst. Both positions actively support all components of the City's GIS environment. Typically, the GIS Coordinator focuses primarily on systems management, software integrations, and asset management, while the GIS Analyst handles more of the mapping, field data collection, and spatial analysis workflows.

GIS Department

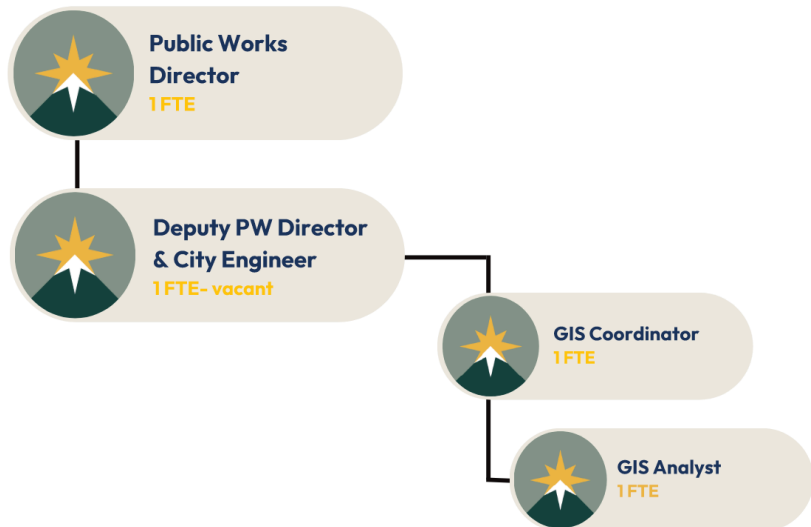
A Division of Public Works

2 FTE Positions

2 Filled Positions

(GIS Only)

0 Vacant Positions



FY26 Accomplishments

GIS Division by the Numbers

- Millions of data records active managed within the GIS and asset management systems
- 50,000+ annual internal views on City utility maps
- 10,000+ annual public views on interactive web maps
- 1000+ new addresses mapped
- 500+ specialized GIS project requests completed annually across 17 departments
- 300+ registered GIS and asset management system users
- 100+ daily logins by City staff to GIS system

Completed

Asset Management System Upgrade: GIS staff implemented a major software upgrade to the City's asset management system, coordinating with Public Works departments to ensure minimal downtime.

Public Map Improvements: Staff deployed new versions of the City's public web maps with updates to accessibility, as well as the new City logo and branding. Additional data was added to the **Pocatello GIS Map**, including historic aerial imagery, environmental layers, and recreation layers.

Adopt a Cemetery Map: GIS developed an interactive web mapping application and sign-up form for the Mountain View Cemetery's 2026 Adopt-A-Section program.

Ongoing

Addressing: GIS staff are responsible for mapping new addresses, ensuring strict compliance with Next-Gen 911 standards, and integrating the complex addressing process that is required with every new development within the City.

Fire Evacuation Zones: GIS is collaborating with Fire Department staff to create wildfire evacuation zones for the City of Pocatello in advance of the summer fire season.

GIS Server Migration: The GIS and IT Departments are working together to migrate GIS data and applications to the new GIS server purchased in FY26.

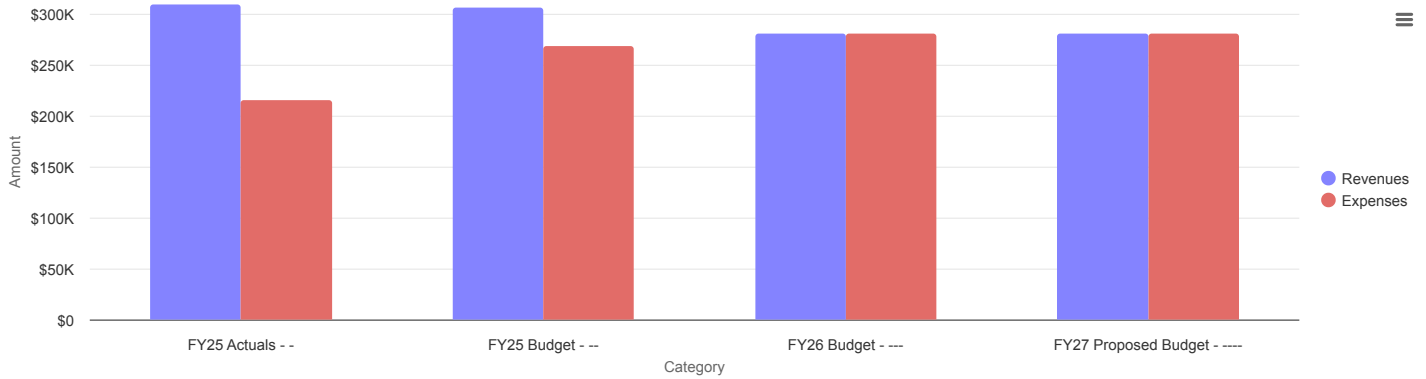
Lucity Integration for Parks: GIS is working with the Parks Department to integrate their asset management workflows with Lucity and to track work that is being done by Parks employees.

FY27 Goals

- **Increase Public Outreach:** GIS staff will continue to optimize public maps to increase accessibility and usability. The GIS Division will update the maps to include additional public datasets as they become available and conduct additional public outreach to ensure widespread use.
- **Data Security Audit:** GIS staff will conduct a formal review of existing data security protocols and identify potential vulnerabilities. Staff will implement changes as necessary to ensure City mapping systems maintain maximum protection against cyberattacks.
- **GIS Process Improvements:** GIS staff will review existing processes (including addressing and utility data entry) and make adjustments to increase efficiency and ensure consistency across departments.
- **Property and Market Value Analysis:** GIS staff will be conducting a spatial analysis of assessed property values in Pocatello to identify economic drivers and support future planning and development efforts.
- **Coordinate System Conversion:** Anticipating the late 2026 release of modernized coordinate reference systems by the federal government, GIS staff will work to convert existing data and ensure compliance with federal standards.
- **Database Architecture Enhancements:** Several legacy GIS datasets will be redesigned to better track, maintain, and report on critical city assets. GIS staff may conduct field verifications as necessary to enhance data integrity.

- **ArcGIS Enterprise Upgrade:** The City's ArcGIS Enterprise system will be upgraded with a new version that adds additional GIS tools and improves quality-of-life for users.

Revenues vs Expenditures



Data Updated: May 27, 2026, 3:08 PM

[View Report](#)

Revenues vs Expenditures Detail

	FY25 ACTUALS	FY25 BUDGET	FY26 BUDGET	FY27 PROPOSED BUDGET
Revenues	-	--	---	----
370-90-02 - Interfund Revenues GIS Engineering Services	\$306,482	\$306,482	\$280,848	\$280,848
393-99-00 - Nonreciprocal	\$2,969	\$0	\$0	\$0
REVENUES TOTAL	\$309,451	\$306,482	\$280,848	\$280,848
Expenses				
Salaries	\$104,510	\$128,169	\$129,750	\$136,306
Salary Related Expenses	\$39,108	\$50,615	\$53,694	\$44,659
Operations and Maintenance	\$49,012	\$44,677	\$48,419	\$48,419
Supplies and Materials	\$516	\$795	\$660	\$660
Professional and Contracted Services	\$8,031	\$29,840	\$28,492	\$19,617
Internal Services	\$14,047	\$14,047	\$19,132	\$30,486
Intergovernmental Transfers	\$681	\$681	\$701	\$701
Other	\$85	\$0	\$0	\$0
EXPENSES TOTAL	\$215,991	\$268,824	\$280,848	\$280,848
Rev - Exp	\$93,460	\$37,658	\$0	\$0

Visit the City of Pocatello's Website

911 N 7th Avenue
Pocatello, ID 83201



Public Engineering

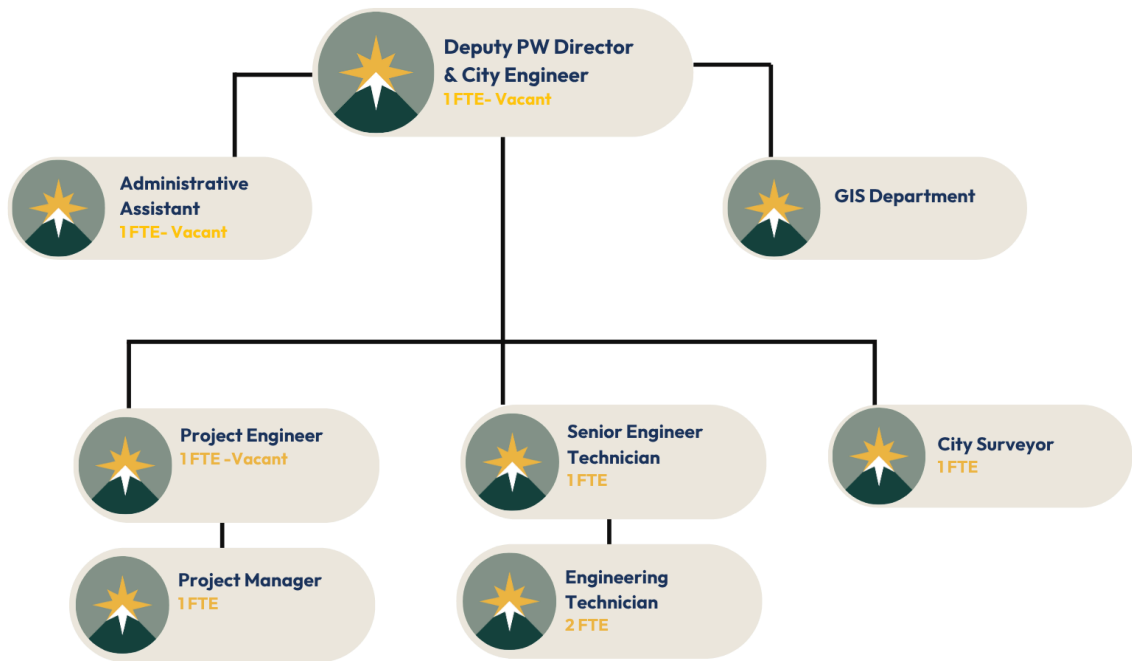
FY27 Proposed Budget

Mission Statement

The mission of the City of Pocatello Engineering Department is to provide professional engineering, construction management, surveying, and development oversight services that support safe, sustainable, and cost-effective public infrastructure for the community.

Engineering Department A Division of Public Works

8 FTE Positions
5 Filled Positions
3 Vacant Positions



About the Department

The City of Pocatello Engineering Department is responsible for advancing infrastructure planning and project delivery through innovative engineering practices, modern technology, and data-driven decision-making. The department oversees capital improvement planning, transportation and utility infrastructure, development review processes, construction management, surveying, permitting, and regulatory compliance to support safe, efficient, and sustainable community growth. The Engineering Department also provides coordination and technical support for City departments by assisting with infrastructure planning, project management, utility coordination, construction oversight, and long-term operational improvements. Through collaboration with developers, contractors, utility providers, and City staff, the department promotes

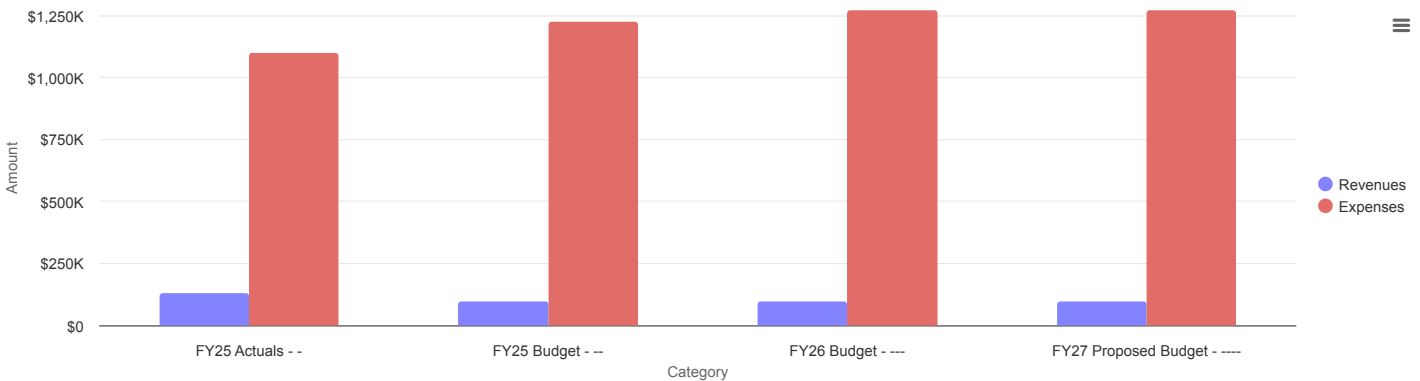
sustainable design, environmental stewardship, public safety, efficient project delivery, and responsible development that supports the long-term needs of the Pocatello community.

Departmental Goals

Future goals for the City of Pocatello Engineering Department include improving coordination and communication with all City departments, developers, contractors, utility providers, and regulatory agencies to facilitate efficient housing, infrastructure, and development processes throughout the community. The department is committed to increasing transparency, streamlining customer interactions, improving internal workflows, and enhancing collaboration to provide more efficient, responsive, and consistent public service.

Additional priorities include utilizing data-driven decision-making, innovative technologies, and modern engineering practices to improve project planning, permitting, construction management, and infrastructure delivery. The Engineering Department will continue updating engineering standards, improving operational efficiency, strengthening regulatory compliance, and promoting sustainable development, public safety, and responsible long-term growth that supports the evolving needs of the City of Pocatello.

Revenues vs Expenditures



Data Updated: May 27, 2026, 3:08 PM

[View Report](#)

Revenues vs Expenditures Detail

	FY25 ACTUALS	FY25 BUDGET	FY26 BUDGET	FY27 PROPOSED BUDGET
	-	--	---	----
Revenues				
331-04-00 - Engineering Fees	\$117,524	\$84,872	\$87,418	\$95,000
385-99-00 - Misc Revenue/Other	\$0	\$197	\$203	\$0
393-02-00 - Capital Savings	\$10,000	\$10,000	\$10,300	\$0
393-99-00 - Nonreciprocal	\$1,262	\$0	\$0	\$0
REVENUES TOTAL	\$128,786	\$95,069	\$97,921	\$95,000
Expenses				
Salaries	\$594,108	\$668,812	\$675,098	\$609,716
Salary Related Expenses	\$284,726	\$311,918	\$355,960	\$366,813
Operations and Maintenance	\$24,249	\$40,229	\$39,432	\$89,432

	FY25 ACTUALS	FY25 BUDGET	FY26 BUDGET	FY27 PROPOSED BUDGET
	-	--	---	----
Supplies and Materials	\$4,796	\$6,356	\$7,000	\$7,000
Professional and Contracted Services	\$42,382	\$43,250	\$44,400	\$56,907
Internal Services	\$137,283	\$142,623	\$134,670	\$126,692
Intergovernmental Transfers	\$13,338	\$13,338	\$14,438	\$14,438
EXPENSES TOTAL	\$1,100,881	\$1,226,526	\$1,270,998	\$1,270,998
Rev - Exp	-\$972,095	-\$1,131,457	-\$1,173,077	-\$1,175,998

Visit the City of Pocatello's Website

911 N 7th Avenue
Pocatello, ID 83201